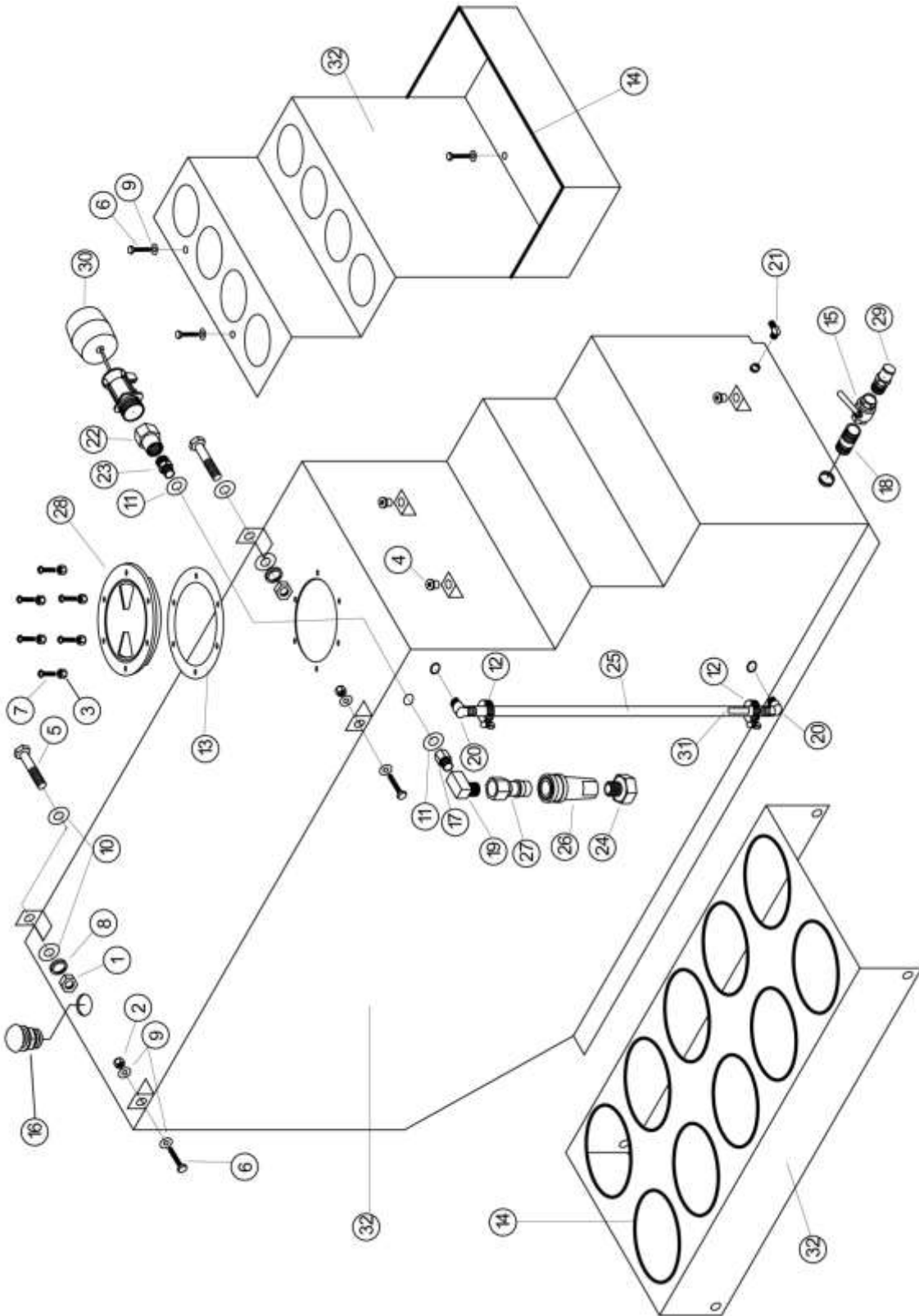


F/W TANK AQUA STORAGE 120 GALLON



F/W TANK AQUA STORAGE 120 GALLON

| REF | PART NO. | DESCRIPTION | NOTES: |
|-----|----------|---------------------------------|--------|
| 1 | 400-015 | Nut, 3/8 x 16 Zinc | |
| 2 | 400-115 | Locknut, 1/4 x 20 Nylon SS | |
| 3 | 400-125 | Locknut, 8 x 32 Nylon SS | |
| 4 | 400-250 | Well Nut, 1/4 x 20 Neoprene | |
| 5 | 405-132 | Bolt, 3/8 x 2 SS | |
| 6 | 405-620 | CS, 1/4 x 3/4 SS | |
| 7 | 410-135 | MS, 8-32 X 3/4 Pan Head SS | |
| 8 | 415-030 | LW, 3/8 Zinc | |
| 9 | 415-125 | FW, 1/4 SS | |
| 10 | 415-135 | FW, 3/8 SS | |
| 11 | 415-165 | FW, 5/8 SS | |
| 12 | 425-115 | Clamp, Hose Silicone | |
| 13 | 475-125 | Gasket, 6" Access Cover - Clear | |
| 14 | 499-005 | Trim, 1/2" Black | |
| 15 | 545-036 | Ball Valve 1" | |
| 16 | 550-004 | Air Valve 1" | |
| 17 | 555-004 | ADPT, 3/8 M x 3/8 F | |
| 18 | 555-080 | Close Nipple 1" | |
| 19 | 555-214 | Elbow 90, 3/8" Street Extruded | |
| 20 | 555-324 | H. Barb 90, 3/8 Barb x 1/4 MPT | |
| 21 | 555-330 | H. Barb 90, 5/8 Barb x 3/8 MPT | |
| 22 | 555-516 | Red. ADPT, 3/4 MPT x 1/2 F | |
| 23 | 555-544 | Red. Nipple, 1/2 MPT x 3/8 MPT | |
| 24 | 555-605 | Swivel, 3/8 MPT x F SVL | |
| 25 | 572-106 | Clear Hose, 1/2 ID | |
| 26 | 580-130 | Q.C. 3/8" FEM (Closed) | |
| 27 | 580-135 | Q.C. 3/8" MALE (Closed) | |
| 28 | 585-210 | Clear Cover, 6" C/W Ring | |
| 29 | 590-404 | PVC Hose Barb 1" | |
| 30 | 597-065 | Valve, Diaphragm - Auto Fill | |
| 31 | 597-075 | Float, Plastic Site | |
| 32 | 860-305 | F/W Tank, C/W Holders | |